

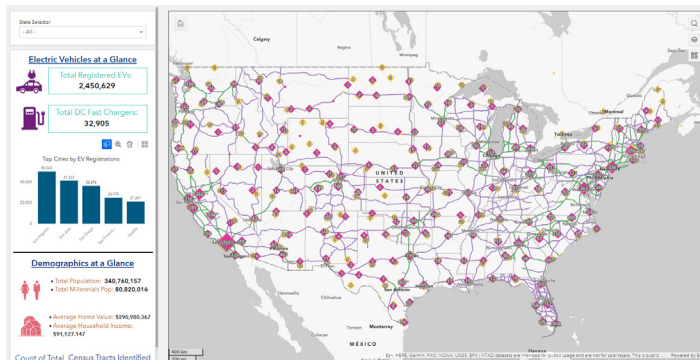


# KPMG Electric Vehicle Infrastructure Geospatial Tool (KELVIN)

A dynamic geospatial analytics tool that incorporates a number of public and private datasets

## What is KELVIN?

The KPMG **E**lectric **V**ehicle **I**nfrastructure Geospatial Tool (KELVIN) supports holistic programmatic planning for clients looking to fund or deploy EV charging infrastructure. Our team's ability to rapidly overlay and join data layers allows us to tailor our analysis to specific client priorities (see next page for further detail).



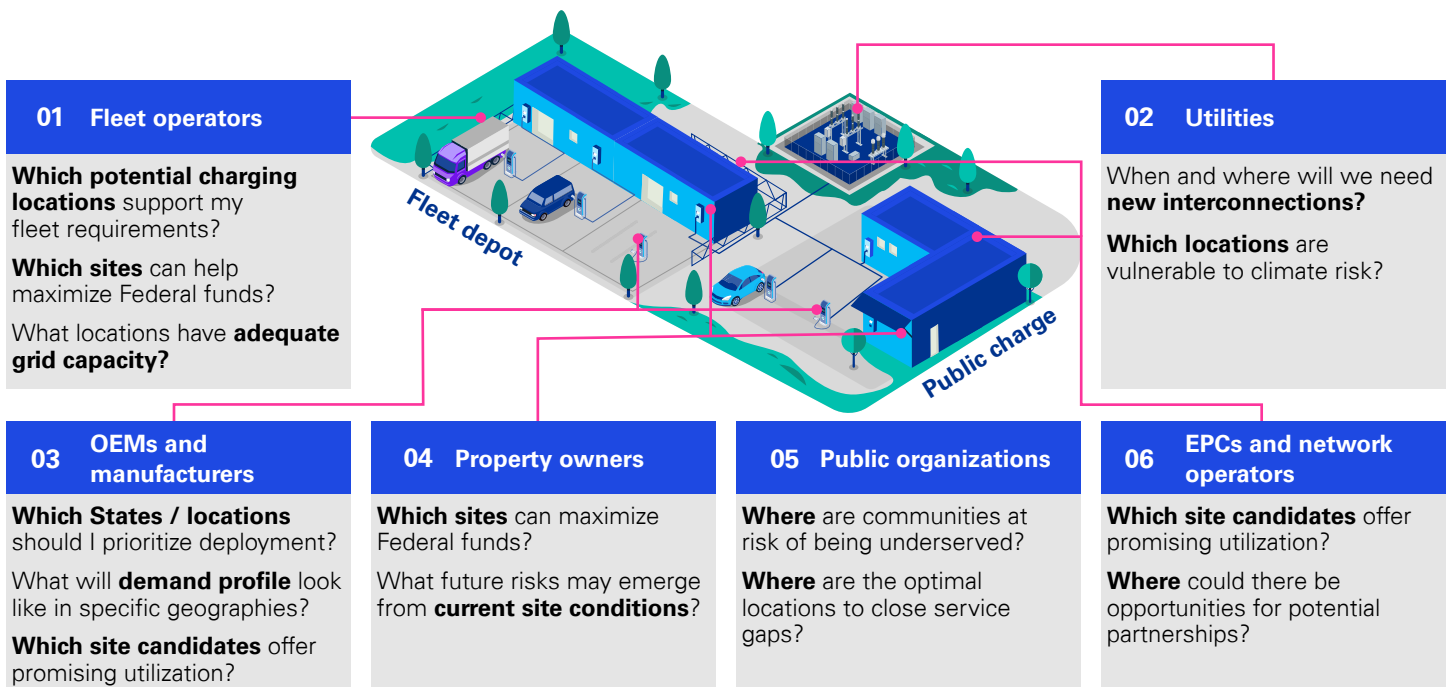
## The idea behind KELVIN:

EV charging represents either a regime change for a lot of organizations or completely new territory – and many of this is driven by the Federal government acting as a focal point for deciding where funding goes.

KELVIN analyzes patterns from combined layers of data to address location-based questions such as:

- Which States / locations should they prioritize deployment to maximize Federal funding?
- Which locations offer the highest potential utilization and return on investment?
- Which locations best service underserved communities, again trying to maximizing Federal funding under Justice40?
- What are the drivers affecting our business outside of the confines of a specific site location?

## KELVIN answers key questions posed by a range of EV market participants:



# KELVIN contains base data layers, with optional custom analytical capabilities:

- 05 Custom analytics layers**  
 Analytics tailored to clients' priorities, operations, and relevant data to generate custom insights based upon, but not limited to, base data layers described below.
- 04 Build-in indices for baseline assessment**  
 Baseline indices including EV charger utilization, Zip Code-level prioritization based on future spot load prediction, and site-level candidacy for Federal grant assistance.
- 03 Energy infrastructure data**  
 Datasets related to power substation locations / density, retail electricity service provider territories, and grid capacity.
- 02 Future EV charging demand**  
 Annual forecasts of EV charging demand based upon EV charger supply growth, traffic patterns, site demographics, and EV adoption profiles.
- 01 Base layer**  
 A national database of USDOT-approved Alternative Fuel Corridors, passenger and fleet EV registrations, gas stations, existing chargers, and charging network providers.

**Benefits to our clients include:**

---

Rapid screening for commercially optimal site candidates

---

Pinpointing service gaps within underserved communities

---

Triaging government funding requirements

---

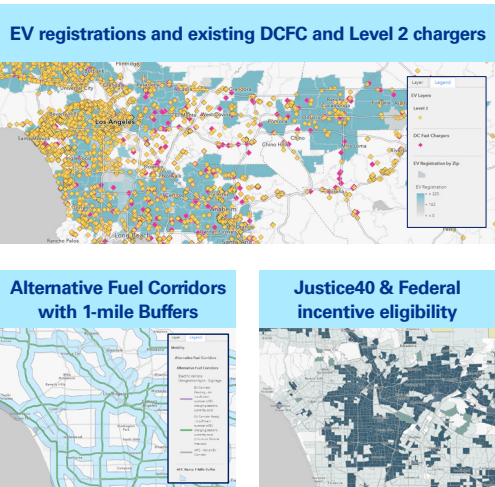
In-depth analysis on site - characteristics to determine future risks

---






Transferrable analysis to other similar infrastructure classes (e.g., broadband)

## KELVIN can address various use cases, including:

Market Participants	
<b>Private market entrants</b> EV market assessment Market entry – (e.g., where to play, how to play) Growth strategy	<b>Fleet owners / operators</b> EV market assessment Fleet conversion strategies Fuel consumption and forecasting
<b>Public agencies</b> EV master planning Infrastructure deployment Fleet conversion Procurement and P3 strategy State-wide decarbonization	<b>Utilities</b> EVSE coordination Transmission and distribution planning EV market assessment



## Please reach out to schedule a KELVIN demo:

- |   |   |   |
|---|---|---|
|  <p><b>Tom Schenk</b><br/>                 Managing Director,<br/> <a href="mailto:tschenk@kpmg.com">tschenk@kpmg.com</a><br/>                 312-665-5556</p> |  <p><b>Michael Stacey</b><br/>                 Director,<br/> <a href="mailto:michaelstacey@kpmg.com">michaelstacey@kpmg.com</a><br/>                 312-375-2867</p> |  <p><b>Dennis Latto</b><br/>                 Director,<br/> <a href="mailto:dlatto@kpmg.com">dlatto@kpmg.com</a><br/>                 312-665-1065</p> |
|  <p><b>Evgeny Logvinov</b><br/>                 Director,<br/> <a href="mailto:elogvinov@kpmg.com">elogvinov@kpmg.com</a><br/>                 781-708-3065</p> |  <p><b>Shane Hayakawa</b><br/>                 Manager,<br/> <a href="mailto:shanehayakawa@kpmg.com">shanehayakawa@kpmg.com</a><br/>                 808-228-5708</p>  |   |

Some or all of the services described herein may not be permissible for KPMG audit clients and their affiliates or related entities.

Please visit us:  [kpmg.com](https://www.kpmg.com)

The information contained herein is of a general nature and is not intended to address the circumstances of any particular individual or entity. Although we endeavor to provide accurate and timely information, there can be no guarantee that such information is accurate as of the date it is received or that it will continue to be accurate in the future. No one should act upon such information without appropriate professional advice after a thorough examination of the particular situation.

© 2024 KPMG LLP, a Delaware limited liability partnership and a member firm of the KPMG global organization of independent member firms affiliated with KPMG International Limited, a private English company limited by guarantee. All rights reserved.

The KPMG name and logo are trademarks used under license by the independent member firms of the KPMG global organization.

DASD-2024-13626