



# KPMG LINK Cost Projector



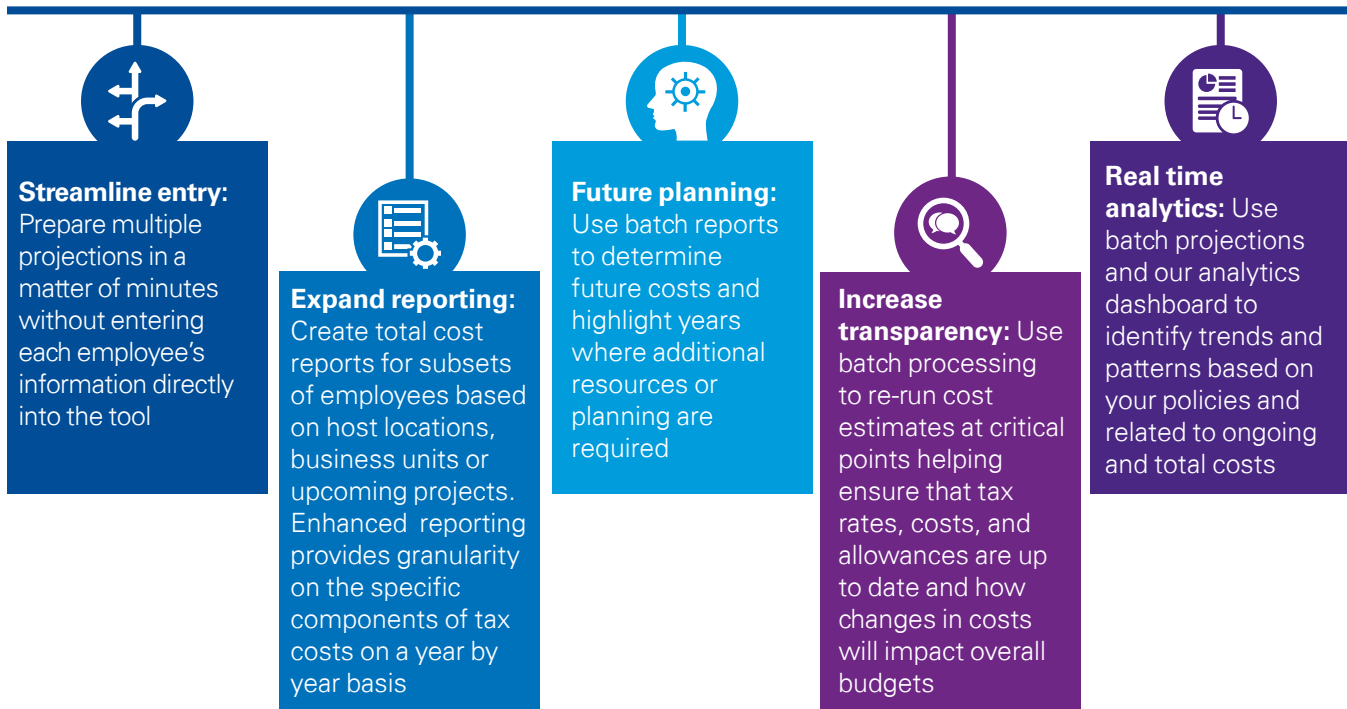
## Creating calculations for multiple employees

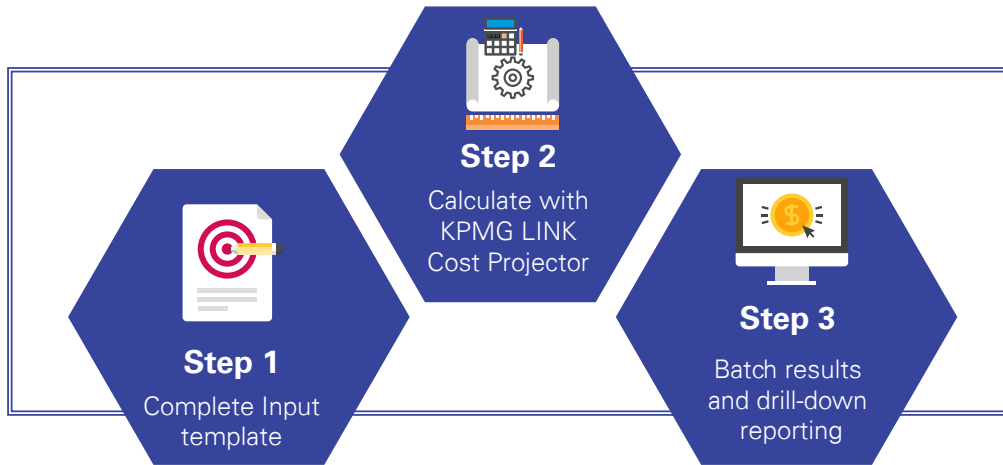
KPMG LINK Cost Projector computes employee and employer taxes for your global workforce – both for domestic and international assignment-related costs, including tax withholding reports.

Recent enhancements include automated creation and reporting for multiple employees providing both high level costs along with specific tax details for each employee.

The system calculates taxes for more than 90 countries and includes logic for all U.S. states, Canadian Provinces, and Swiss Cantons. A generic country option also allows for the inclusion of additional countries giving you flexibility in defining country combinations and calculating applicable taxes.

KPMG LINK Cost Projector's batch functionality enables you to:





**Case Study:** Equity Project Based Costing to a New Level

A construction company was preparing a bid for a large project covering 85 employees in three countries: Ghana, India and Kenya. They needed both high level and very granular details: the total project cost as well as a per country tax cost value for each level of employee.

Using KPMG LINK Cost Projector’s batch import functionality, they quickly uploaded the compensation details for the 85 employees and within minutes produced a total cost report for the project along with a breakdown for each country.

Next, using the new Detailed Output functionality, they determined the per employee tax cost for all levels from intern to vice president for each country. This information was critical for their internal cost system prepare the final project bid.

**Case Study:** Determining State Taxes for Remote Workers

A large food and beverage distributor is currently working on a remote work model and is looking to understand differences in net salary in New York, New Jersey, Pennsylvania, Connecticut, and Massachusetts for their 14 unique pay classes.

The company entered information for annual salary and incentive compensation into KPMG LINK Cost Projector’s batch import template selecting the 5 states in question along with multiple iterations for family size and filing status.

The system provided the company with estimated tax amounts for Federal, Social, and State taxes allowing the company to design compensation packages and alert employees to potential changes based on the new remote work model. In addition, the company was able to use information on differences in state tax amounts to make hiring decisions to source the best remote talent while managing costs.

Some or all of the services described herein may not be permissible for KPMG audit clients and their affiliates or related entities.

## Contact us

**Anna V. Wheeler**  
Principal,  
Global Mobility Services  
T: 704-371-5241  
E: avolinkaty@kpmg.com

[kpmg.com/socialmedia](https://kpmg.com/socialmedia)



The following information is not intended to be “written advice concerning one or more Federal tax matters” subject to the requirements of section 10.37(a)(2) of Treasury Department Circular 230.

The information contained herein is of a general nature and based on authorities that are subject to change. Applicability of the information to specific situations should be determined through consultation with your tax adviser.

© 2022 KPMG LLP, a Delaware limited liability partnership and a member firm of the KPMG global organization of independent member firms affiliated with KPMG International Limited, a private English company limited by guarantee. All rights reserved. The KPMG name and logo are trademarks used under license by the independent member firms of the KPMG global organization. NDP283807-1A